



TPS6 Series Gas-insulated Compact Switchgear

TPS6 is a SF6-insulated medium voltage switchgear for secondary distribution network up to 24kV. It offers a choice of either a switch-fuse combination or vacuum circuit breaker with relay for protection of the transformer. TPS6 is a completely sealed system with a stainless steel tank containing all living parts and switching functions. A sealed steel tank with constant atmospheric conditions ensures a high level of reliability as well as personnel safety and a virtually maintenance-free system.

Features

- IP67 for primary parts
- All live parts are sealed after installation
- Nine functional units with flexible combination
- Maximum six panels in one SF6 tank
- Single modular panel applicable
- Top/side extension
- IAC AFLR

- Self-powered relay for circuit breaker
- Load break switch-fuse combination or vacuum circuit breaker used for transformer protection
- Manual/motorized operation
- Compatible with SCADA

Complied Standards

- IEC 60071-1
- IEC 62271-1
- IEC 62271-100
- IEC 62271-102
- IEC 62271-103
- IEC 62271-105
- IEC 62271-200



PT. HEZONG ELEKTRIK INDONESIA

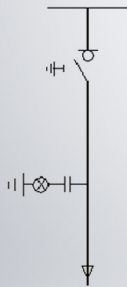
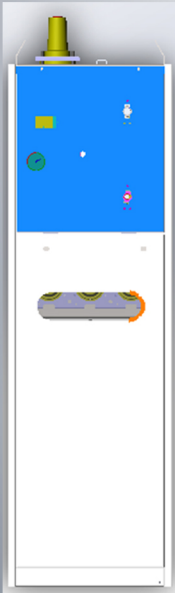
Komplek Pergudangan Sinar Buduran III Blok A-43
Jl. Raya Lingkar Timur, Sidoarjo 61252, Jawa Timur - Indonesia

Phone : 031 9971 8295

Fax. : 031 9971 8292

Email: sales@hezong.co.id

Website : www.hezong.co.id



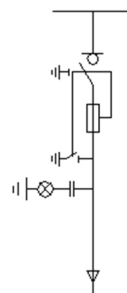
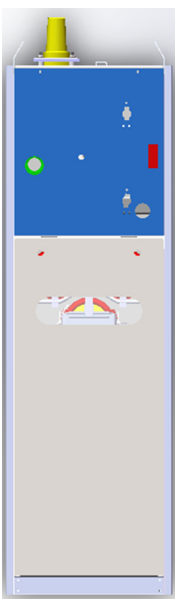
TPS6-24/T630-16-K-D

| | |
|---|---------------|
| H | 1400mm/1650mm |
| W | 440mm |
| D | 800mm |
| W | 150kg |



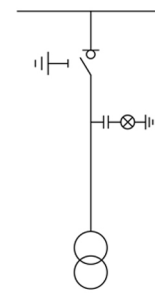
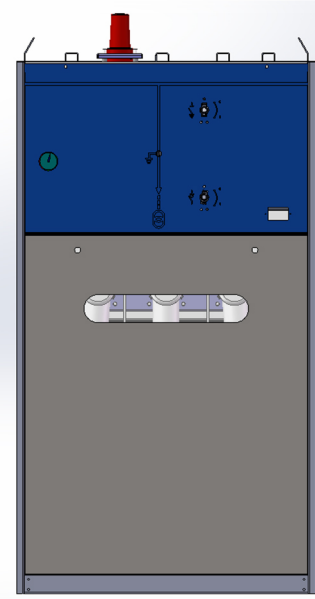
TPS6-24/T630-16-W-D

| | |
|---|---------------|
| H | 1400mm/1650mm |
| W | 440mm |
| D | 800mm |
| W | 250kg |



TPS6-24/T63-31.5-T-D

| | |
|---|---------------|
| H | 1400mm/1650mm |
| W | 440mm |
| D | 800mm |
| W | 200kg |



TPS6-24/T630-16-M-D

| | |
|---|---------------|
| H | 1400mm/1650mm |
| W | 790mm |
| D | 800mm |
| W | 350kg |